

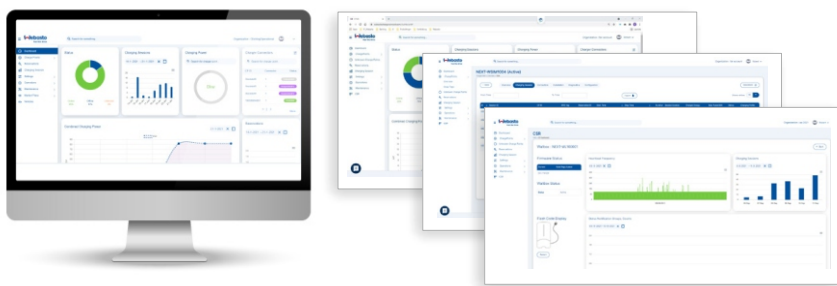


Webasto ChargeConnect

The ideal digital addition to the Webasto charging station

Make full use of the advantages of Webasto ChargeConnect – this not only makes managing and controlling your charging infrastructure much easier but it is also a lot of fun. Always keep track of your Webasto charging stations.

With Webasto ChargeConnect, you can access the current status of your charging stations, the entire charging history, your energy consumption, and much more at any time and from anywhere. The data from your charging stations is reflected in the Webasto ChargeConnect portal and app, offering maximum transparency, control, and security. This makes Webasto ChargeConnect and the Webasto charging station the perfect tandem for an outstanding charging experience.



Webasto ChargeConnect Portal

The digital web interface

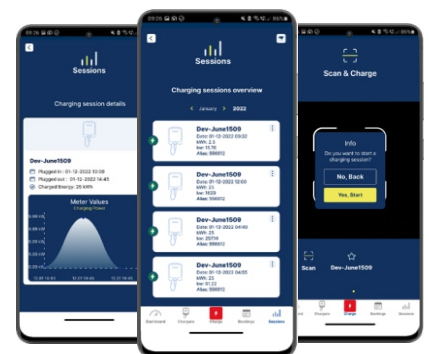
Webasto ChargeConnect is the perfect portal for the comprehensive management of several Webasto charging stations. In the clear, web-based user interface, you can view all charging data digitally 24/7 and configure or manage the charging infrastructure and its users with a mouse click.

Webasto ChargeConnect App

The mobile companion

With the Webasto ChargeConnect App, your Webasto charging station is just a tap away. You can access all current and past charging sessions, start and stop them digitally, and authorize other users for a charging point directly via the mobile application. Simply download the app, register your charging station, and off you go.

| Webasto ChargeConnect App | |
|---------------------------|---|
| Provider | Webasto Charging Systems inc. |
| Compatibility | Requires iOS version 10.0 or later Requires Android version 5.0 or later |
| Download | Google Play and App Store (for free) |
| Size | 25,5 MB (03/2022) |
| Language | English, German (Other language versions will follow) |



| User Role | Description | Private Customer | Business Customer |
|--------------------|--|------------------|-------------------|
| Owner | Has full access to the features as a user | X | |
| Family and friends | Has permanent restricted access and can start and stop charging for one or more specific charging stations (displayed under 'shared'). | X | |
| Admin | Comparable to the role of owner (private customer) | | X |
| User | Comparable to the role of family and friends (private customer) | | X |
| Guest | Has temporary and limited access even without a registered account and can start and stop charging processes for one or more specific charging stations. | X | X |

Webasto ChargeConnect

Simple and intuitive – all features at a glance

| Category | Feature | Description | App | Portal |
|---|--|---|-----|--------|
|  Display | Charging sessions | Display details of the last charging session with status, time stamp, duration, charging quantity as well as graphic display and evaluation option of charging sessions with filtering by charging station and authorisation tag. | x | x |
| | Overview charging stations | Overview of all connected chargers, categorised by favourite, residential and commercial as well as shared charging stations. | x | x |
| | Logs | Logs contain information that the charging station sends to the backend. These logs can be viewed by the charging station users (except 'family and friends users' and 'guest users') to obtain detailed information about the activities and status of the charging stations. | | x |
| | Alerts | Display of system information as status messages in the notification area with instructions on how to proceed. | | x |
|  Evaluation | Dashboard | Display total consumption of the charging processes of all connected chargers with weekly and monthly overview. | x | x |
| | Data export | Data export in the formats *.csv, *.xlsx and *.pdf* (*.pdf only via app). The charging data can then be further processed with other applications to prepare for reimbursement application to employers or authorities. | x | x |
|  Operation | Registration | Initial registration of a Webasto ChargeConnect user with creation of a Webasto ChargeConnect account via the app. The account can then be used to access app and portal. | x | |
| | Starting and stopping charging processes | Start and end charging processes via app and web portal (Scan & Charge as one of several options only via app). | x | x |
| | Restart charging station | Perform a restart of an owned charging station. | x | x |
| | Sharing a charging station (Invitation) | Share your own charging station with family or friends after entering email address and expiration date. | x | |
| | Sharing a charging station (Using an invitation as a guest) | The invited guest receives an email. Guest can only use the charging station temporarily (time period is specified). To do this, the guest must download the Webasto ChargeConnect app and open it as a guest. By entering the relevant email address and activation code (received by email), the charging station can be used according to the specifications. | x | |
|  Configuration | Sharing a charging station (Using an invitation as family and friends) | The invited family or friend receives an email. Family and friends is a registered user. The shared charging station is then added in the Webasto ChargeConnectApp under 'shared' and can be used. This is also possible via the web portal. | x | x |
| | Configuration of user profile | The user can change the password, access the quick start-guide, the Terms of Use and Privacy Policy and delete the account. | x | |
| | Authentication management | Adding, editing and favouriting authentication tags (e.g. RFID tags) to start and end charging processes at the charging station. By assigning tags to users, the charging processes can then also be evaluated on a user-related basis. | x | x |
|  Support | Adding a charging station | Add a charging station by scanning a QR code or entering it manually. | x | |
| | Updates | Provision of updates with bug fixes, stability and performance improvements as well as functional enhancements (in case of the app through updates provided in the app stores). | x | x |
| | Quick start-guide | Get to know the essential functions of the app step by step. | x | |

Webasto ChargeConnect is compatible with the Webasto Next as well as the following Webasto Live part numbers: 5110360C, 5110361C, 5110263C, 5110359C